



PARC ZOOLOGIQUE DE PARIS

— 2015 Sales Manual —



PARC
ZOOLOGIQUE
DE PARIS

A new breed of zoo





PAGES 4-5
PARC MAP

PAGES 6-7
PATAGONIA AND SUDANESE
SAHEL BIOZONES

PAGES 8-9
EUROPE AND FRENCH GUIANA
BIOZONES

PAGE 10
MADAGASCAR BIOZONE

PAGE 11
TOURS AND EVENTS...
A DIFFERENT WAY
TO EXPLORE THE ZOO

PAGES 12-13
ENJOYING THE PARC'S FACILITIES

PAGE 14
PRACTICAL INFORMATION:
ORGANIZING YOUR VISIT

PAGE 15
SPECIAL DEALS FOR BUSINESSES

A MUSEUM ATTRACTION

THE WORLD'S ONLY
FULLY REDEVELOPED ZOO

Eighty years after it was first opened, the Parc Zoologique de Paris has undergone major redevelopment work spanning a three-year period, and now boasts a brand new concept, an overhauled visitor experience, and the best possible facilities to accommodate one thousand animals in optimal conditions for their well-being.

The National Museum of Natural History has, in this iconic location, invented the zoo of the 21st century: more than just an attraction, it is an effective tool for raising awareness of nature, a wildlife conservation centre that cares for the animals, and a science and research centre.

THE PARC ZOOLOGIQUE DE PARIS

A NEW BREED OF ZOO

SET OFF AROUND THE WORLD

The Parc Zoologique de Paris immerses visitors in the animals' natural environment on a journey across the world's five major regions: the rocky coast of Patagonia and its Pampa, the savannah of the Sudanese Sahel, the mighty conifer forests of Europe, and the tropical climes of French Guiana and Madagascar. An extraordinary collection of species awaits as you travel the world without leaving Paris. Species on show range from the endangered – lemurs, scimitar-horned oryx, Grévy's zebra – to the most iconic – giraffes, wolves, lions – and unusual – wolverines, manatees, and anteaters.

ENCOUNTERING THE ANIMALS

This new breed of zoo is designed around an unprecedented concept: visitors are invited into the animals' natural habitat where the animals are no longer simply on display. The observation posts bring humans and animals closer together, affording views through wide bay windows and a chance to glimpse what goes on underwater, with the utmost care taken to protect the animal's well-being.

KEY FIGURES

14.5
Hectares

40%
vegetation cover

800
different
species of plant

2258
trees planted

74
bird species

42
mammal species

21
reptile species

17
amphibian
species

15
fish species

MORE THAN 1000 ANIMALS FROM 180 SPECIES

PARC ZOOLOGIQUE DE PARIS MAP



Toilets



snack bars
(Take away)



View point



Restaurants



Drinking fountain



Veterinary clinic



Visitor Information



Gift Shop



Exploration pavilion



Picnic area

EUROPE

10,800m²

4 habitats: evergreen forest and, in the vivarium: garrigue, swamp, and cold mountains.

28 species including the Iberian wolf, Scandinavian lynx, birds of prey, cinereous vultures, and a range of amphibians.

FRENCH GUIANA

12,530m²

3 habitats: equatorial forest, creek, and river.

67 species including a range of small primates, the dwarf caiman, manatees, hyacinth macaw, and anaconda.

SUDANESE SAHEL

45,215m²

4 habitats: wooded savannah, shrubby savannah, sparse savannah, and delta.

44 species including the West African giraffe, white rhino, ostrich, Guinea baboon, scimitar-horned oryx, greater kudu, white antelope, marabou stork.

MADAGASCAR

9,655m²

2 habitats: rainforest and dry forest.

30 species including lemurs, the fossa, radiated tortoise, grey-headed lovebird.

PATAGONIA

16,570m²

3 habitats: the Patagonian Pampa, rocky coastline, and Andean forest.

7 species including sea lions, Humboldt penguins, pumas.

Entrance
Exit



The journey begins in Patagonia as you set off to explore southern lands: the Pampa and the low-lying vegetation where rhea (a bird related to the ostrich), mara (Patagonian hare) and guanaco (related to the lama) roam. Then visit the icy mountains, home to South American sea lions and Humboldt penguins, before arriving in the Andean forest that pumas and pudu call home.

1. HUMBOLDT PENGUIN
© M.N.H.N - F.-G. GRANDIN

2. PUMA
© Eduard Kyslynsky - shutterstock

3. SOUTH AMERICAN SEA LION
© M.N.H.N - F.-G. GRANDIN



DID YOU KNOW?

Sea lions can adapt to live in water with different levels of salt. The outer pool is filled with fresh water, while the inner pool, where they spend the night, is filled with saltwater. The fish that they feed upon are unwashed and provide additional sea salt.



1



2

High grasses, spiny shrubs, and warmly coloured rocks... explore the Sudanese Sahel Plain that stretches from the savannah to the deltas of major African rivers, and see roaming white rhinos, giraffes, Grévy's zebra, West African lions, and baboons. Cross the great aviary on a wooden pontoon, and take in the pink flamingos and free-flying birds.

1. LION
© M.N.H.N - F.-G. GRANDIN

2. GRÉVY'S ZEBRA
© M.N.H.N - F.-G. GRANDIN

3. GREATER KUDU
© M.N.H.N - F.-G. GRANDIN

4. WHITE RHINO
© M.N.H.N - F.-G. GRANDIN

5. GUINEA BABOON
© M.N.H.N - F.-G. GRANDIN



3



4



5

THE GIRAFFE HOUSE

The zoo's iconic lodgers, 16 giraffes remained on site throughout the renovation work. The male, Benny, the females (Adeline, Agamie, Guenièvre, Aurore, Ariane, Adège, Lady, Gaya, Goumie, Riwei) and their young (Gatimu, Romy, Uzul, Roy, Djuba) only venture out when outdoor temperatures pass 12°C, and enjoy the warmth of their 7m high lodge the rest of the time, watched by visitors from a walkway 3m above the ground.



1. IBERIAN WOLF
© M.N.H.N - F.-G. GRANDIN

At the foot of the Grand Rocher, in the shadow of the mighty evergreens, spy the animals living at the heart of Europe's forests: otters, cinereous vultures, the northern bald ibis, wolves, lynx, and wolverine. Within the vivarium, river, garrigue, and mountain habitats are populated by frogs, newts, toads, turtles, lizards, and snakes.

DID YOU KNOW?

A fish farm has been installed under the Grand Rocher to feed the otters. We feed them with live fish that they hunt by sight and by detecting disturbances in the water.



2

2. EUROPEAN OTTER
© M.N.H.N - F.-G. GRANDIN



3

3. WOLVERINE
© M.N.H.N - F.-G. GRANDIN



4

4. GRIFFON VULTURE
© M.N.H.N - F.-G. GRANDIN



1



2

The French Guiana biozone includes both outdoor and indoor areas under the glass dome of the Great Greenhouse, and recreates the equatorial rainforest, also known as the "Green Hell". See macaws, tamarinds, white-faced saki, anteaters, boa constrictors, manatees, tapir, and jaguar...

1. ANTEATER
© M.N.H.N - F.-G. GRANDIN

2. HYACINTH MACAW
© M.N.H.N - F.-G. GRANDIN

3. JAGUAR
© M.N.H.N - F.-G. GRANDIN



3

THE GREAT GREENHOUSE

The giant greenhouse (4000m², 100m long, 16m high) recreates the climate of the French Guiana and Madagascar biozones. It was a herculean task to recreate the tropical vegetation within the greenhouse with over 3800 plants: exotic plants were chosen in Florida, acclimatized in Holland, and then transported on over 20 trailers.



1. RING-TAILED LEMUR
© M.N.H.N - F.-G. GRANDIN

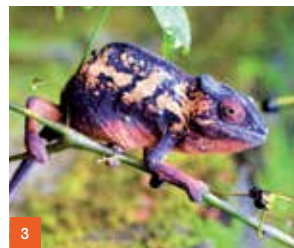
2. MADAGASCAR TOMATO FROG
© M.N.H.N - F.-G. GRANDIN

3. PANTHER CHAMELEON
© M.N.H.N - F.-G. GRANDIN

Ravinala and rows of palm trees... the tropical Madagascan forest has been recreated in the Great Greenhouse, and is home to colourful birds (fody, Madagascan ibis, etc.), free-climbing sloths, and lemurs that include the great bamboo lemur, the most endangered of the lemur species. As you leave, cross the dry forest that is home to the fossa (a small carnivorous mammal), and radiated tortoise.

DID YOU KNOW?

To provide the great bamboo lemur and other herbivores with a taste for bamboo with their daily supply, a cold room with pool has been installed so that we never run out.



TOURS AND EVENTS

A DIFFERENT WAY
TO EXPLORE THE ZOO

TOURS

OPEN VISIT

Meet the people who work at the Parc

Watch as staff feed the wolves, sea lions, and penguins, and dive with the manatees, or carry out "medical training" (also known as veterinary conditioning: training the animals to get used to being handled), and see what goes on behind the scenes at the zoo (clinic)... new events are scheduled every day!

Enjoy a multimedia visit:

- Exploration stands with interactive touch screen tables
- Information panels about the landscape and animals
- Audio/video guides for foreign visitors and disabled people
- Parc guides for all

GUIDED TOURS

A number of 2-hour tours are available:

- Parc exploration tour
- Themed tours
- "Sensory" tour that includes: touch tours, name-that-sound, observations, name-that-smell, etc.

BIRTHDAYS

Kids' birthday events include a "vet's apprentice" workshop or treasure hunt with birthday meal in the Parc restaurant.

BOOKINGS

Our bookings team is at hand to help you plan your visit. Groups are strongly advised to book. €9 booking fee. Booking is free for special visits (guided tours). Guided tours and birthdays must be booked in advance.

CONTACT

Booking team opening hours:

9am to 6pm

Tel.: +33 (0)811 224 122

email: resa.pzp@mnhn.fr

IMPORTANT INFORMATION FOR GROUPS:

When you arrive, take your booking confirmation to Window 1, which deals exclusively with groups.



LEISURE FACILITIES

ENJOY THE PARC'S FACILITIES

2 RESTAURANTS:
SIAM AND ZARAFA

4 SNACK BARS

1 SNACK VAN

2 PICNIC AREAS



RELAXATION
AREAS
(NEARLY
100 BENCHES)

PLAY AREAS

1 SHOP



WHEELCHAIRS
AVAILABLE

RESTAURANTS

SIAM

Two dining halls for 68 and 66 diners
Outdoor terrace with 82 places

Located at the entrance to the Parc, SIAM offers seated dining with table service throughout the day.

Group restaurant

Special deals for groups:

- Two adult meals (€17 and €28)
- 1 kids' meal (€9)
- 1 baby meal (€5.10)
- Adult/kids picnic deal €8.50/€5.50
- Adult/kids snack deal €4.50/€3.50

For more information about our range of "group" menus, download the group menu at parczoologiquedeparis.fr.

Please note: The prices shown are for information purposes only and are subject to change.

ZARAFA

Seats for 114 diners
Outdoor terrace with 56 places

Located in the heart of the Sudanese Sahel biozone, ZARAFA provides a range of dining options with service at the bar. The menu includes:

- Grill & Plancha
- Pasta & Pizza
- Soup & Salad

SNACK BARS

Our takeaway snack bars provide a range of sandwiches, salads, ice creams, and drinks. A "snack box" is also available for kids, containing a drink, a pastry, and a surprise treat.

To read all of our menus, find out our prices, and make your booking: rpzp@groupe-casino.fr



ACCESSIBILITY FOR ALL

In an effort to obtain "Tourisme & Handicap" certification, the Parc Zoologique de Paris provides a full range of facilities to improve access for disabled visitors (physical and mentally disabled, deaf, blind).





CONTACT

Parc Zoologique de Paris
Sales & Marketing Team
53 avenue de Saint-Maurice, 75012 Paris
commercialpzp@mnhn.fr
www.parczoologiqueparis.fr

PRACTICAL INFORMATION

ORGANIZING YOUR VISIT

RECEPTION

Open all year. With a range of indoor spaces (the Great Greenhouse, giraffe house, and the vivarium), the Parc Zoologique can be visited at any time of year.

Opening times

Mid-October to mid-March:

— 10am to 5pm

Mid-March to mid-October:

— 10am to 6pm weekdays
— 9.30am to 7.30pm weekends, public holidays, and French school holidays

GETTING HERE

Single entrance

At the intersection of Avenue Daumesnil and the Route de Ceinture du lac Daumesnil, 12th arrondissement, Paris

Metro: Line 8 - Porte Dorée/Line 1 - station Château de Vincennes

RER: Line A - Vincennes

Bus: 46, 86, 325 (alight at Parc Zoologique de Paris)

Tramway: T3 - alight "Porte Dorée"

By car

Get preferential rates on parking:
www.parkingsdeparis.com (booking centre)

By coach

Three "drop-off" parking places to drop off groups at the Parc.

Book parking spaces: www.passautocar.paris.fr

1. WHITE-FACED SAKI
© M.N.H.N - F.-G. GRANDIN

2. VEGETATION IN THE GREAT GREENHOUSE
© M.N.H.N - F.-G. GRANDIN

SPECIAL DEALS FOR BUSINESSES

BUY TICKETS IN ADVANCE AND GET A SPECIAL RATE (adults, kids, groups)

- Available in advance
- Undated tickets can be used every day of the year, valid for 2 years (refunds available with conditions)
- Discounts
- Queue-jumpers

Purchase orders and Terms & Conditions are available via our website: parczoologiqueparis.fr

GROUP VISITS (20+ visitors)

- Queue-jump (priority window)
- Invoiced for number of people present on day (excluding catering)
- Free entry for group leader and coach driver(s). Discounted meals for drivers.

MEET THE PEOPLE BEHIND THE PARK

Do you want to explore the Parc Zoologique de Paris? Get in touch to find out about special tours.

You are also welcome to come and say hello if you see us at a trade show. To see a list of trade shows that we will be attending, visit parczoologiqueparis.fr

DOCUMENTS

To help you talk about the Parc Zoologique de Paris, we can send you free flyers/totems/posters upon request.



